



PLECS

DEMO MODEL

Buck Converter with Stray IGBT Tail Current

Last updated in PLECS 4.3.1

www.plexim.com

- ▶ Request a PLECS trial license
- ▶ Check the PLECS documentation

1 Overview

This demonstration shows a simple unregulated buck converter that models the impacts of stray inductances and an IGBT with tail current.

2 Model

The schematic below shows a simple buck converter using the IGBT with Limited di/dt component. This IGBT model represents the collector current transients during switching, including a finite fall time during turn-off and limited di/dt during turn-on. Since the current is not turned off instantaneously, this IGBT model may be connected in series with a stray inductance, L_2 in this model.

The free-wheeling diode is also modeled as subsystem that represents the dynamics of the diode's reverse recovery characteristic. A stray inductance, L_3 is modeled series with the diode as well.

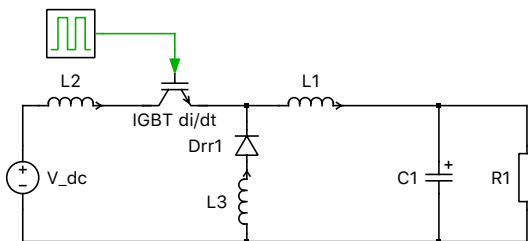


Figure 1: Buck Converter with Stray IGBT Tail Current

3 Simulation

The simulation shows the over-voltages that stem from the stray inductances and the reverse recovery of the free-wheeling diode. The di/dt limitation during turn-on determines the magnitude of the reverse recovery effect in the free-wheeling diode.

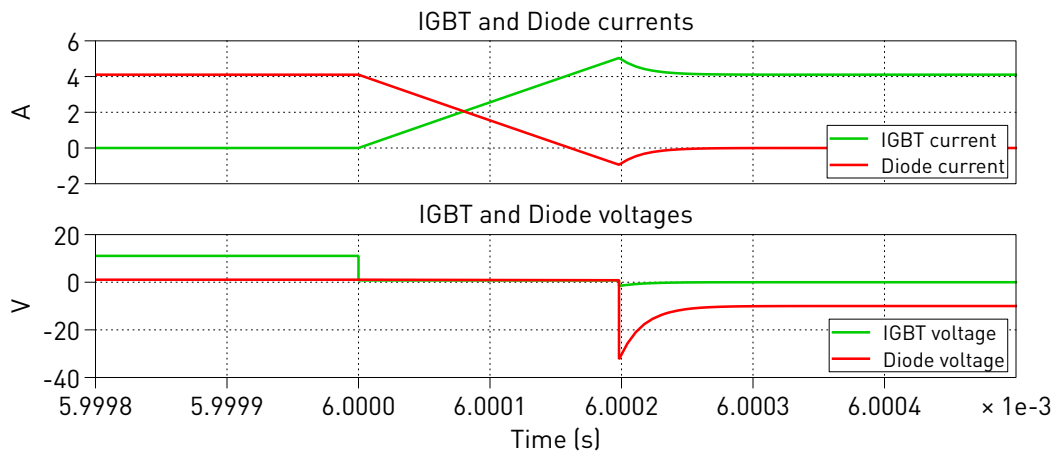


Figure 2: Voltage and current transients during IGBT turn-on

4 Conclusion

In contrast to the ideal IGBT model that switches instantaneously, this model represents the IGBT transients during switching. With this approach stray inductances may be connected in series with the

device. The additional voltage stress due to the diode reverse recovery effect is also modeled.

Revision History:

PLECS 4.3.1 First release

How to Contact Plexim:

☎	+41 44 533 51 00	Phone
	+41 44 533 51 01	Fax
✉	Plexim GmbH Technoparkstrasse 1 8005 Zurich Switzerland	Mail
@	info@plexim.com	Email
	http://www.plexim.com	Web

PLECS Demo Model

© 2002–2021 by Plexim GmbH

The software PLECS described in this document is furnished under a license agreement. The software may be used or copied only under the terms of the license agreement. No part of this manual may be photocopied or reproduced in any form without prior written consent from Plexim GmbH.

PLECS is a registered trademark of Plexim GmbH. MATLAB, Simulink and Simulink Coder are registered trademarks of The MathWorks, Inc. Other product or brand names are trademarks or registered trademarks of their respective holders.