

RT Box

DEMO MODEL

Demo Application for the XML-RPC Scripting Interface of the RT Box

Using Python and a RLC circuit in PLECS

Last updated in RT Box Target Support Package 1.8.3

www.plexim.com

- ▶ Request a PLECS and PLECS Coder trial license
- ▶ Get the latest RT Box Target Support Package
- ▶ Check the PLECS and RT Box documentation

1 Overview

This demo model is aimed at demonstrating the basic usage of the XML-RPC interface of the RT Box using a Python script. The script features basic interactions such as:

- Uploading an executable to the RT Box
- Starting a real-time simulation
- Setting a Programmable Value block
- Reading back data from a Data Capture block

Note This model contains model initialization commands that are accessible from:

PLECS Standalone: The menu **Simulation + Simulation Parameters... + Initializations**

PLECS Blockset: Right click in the **Simulink model window + Model Properties + Callbacks + InitFcn***

1.1 Required Software and Hardware

The following section lists the needed software and hardware to fully run this XML-RPC demo example.

Source Files

There are two files included with this model: a PLECS model (.plecs for Standalone and .mdl for Blockset) and a .py Python script. These files can be found in the RT Box Demo Models section of the PLECS Help Browser.

Generating an .elf File from PLECS

To generate a new executable and linking format (.elf) file, a PLECS and PLECS Coder license are needed. To request a trial license for these products, please visit www.plexim.com/trial.

To generate an .elf file, please follow the steps below:

- Open the PLECS Standalone or the PLECS Blockset model of interest.
- Select the appropriate **System** from the **Coder + Coder options...** window. Then, from the **Target** tab, select PLECS RT Box 1 as the target from the dropdown menu.
- Leave the **Target Device** field empty and click on the **Build** button. This generates an .elf file without uploading a model to a specific target. The generated .elf file is placed in the same directory as the respective PLECS model file, by default.

For Executing a Python Script on the RT Box

Once the .elf file is generated, a license for PLECS or the PLECS Coder is no longer necessary to execute the Python script. An RT Box connected to the host computer via Ethernet is required.

Installing Python

For Windows and Mac operating systems, Python 2.x or Python 3.x can be newly installed or updated from <https://www.python.org/downloads/> (Python 2.x comes pre-installed on Mac OS X).

2 Model

The modeled electrical system is a simple RLC network, as shown in Fig. 1. A capacitor is charged by a DC voltage source via an RL branch and its voltage and current are monitored using a Voltmeter and Ammeter, respectively. The target of this application is to find the maximum voltage that occurs during the transient when an input voltage step is applied.

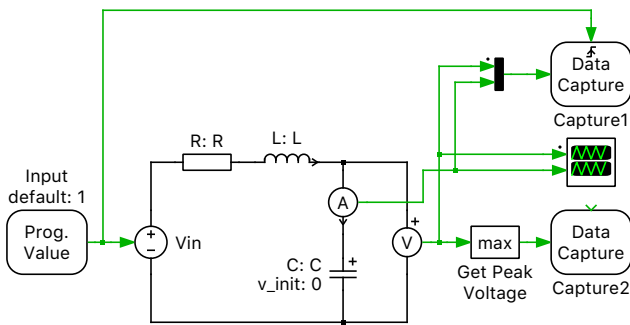


Figure 1: RLC network with scripting

3 Scripting

The operation of the RT Box can be controlled over its inbuilt XML-RPC interface. An overview of the scripting interface is given in Fig. 2. It processes requests and sends back the required data using Extensible Markup Language (XML). XML-RPC is supported by a variety of programming languages, such as Java, Python and C. This particular example features basic interactions with the RT Box, such as loading an .elf file on the RT Box, starting a simulation, and reading data from or sending data to the real-time simulation using Python. In general such a scripting environment can be used to implement automated testing procedures.

Note The XML-RPC interface has a non-deterministic latency. Therefore it is not capable to perform time critical tasks such as control actions in closed-loop fashion, where time delay affects stability.

More information on the RT Box's XML-RPC interface can be found in the RT Box User Manual [1].

3.1 The Python Script

The following section explains selective parts of the Python script that is used in this demo model.

Because of minor differences in the syntax for Python 2.x and Python 3.x, the script first extracts the Python version and uses the appropriate syntax accordingly. In this section, the code is explained using the Python 3.x syntax.

The XML-RPC socket is set up to listen for incoming data on TCP port 9998. Before executing this script the RT Box hostname in the script must be changed from `examplebox.local` to the hostname of the RT Box that is used to run this example.

```
import xmlrpc.client
ip = socket.gethostbyname('examplebox.local.')
server = xmlrpc.client.ServerProxy('http://' + ip + ':9998/RPC2')
```

Then the generated .elf file is read and uploaded to the configured RT Box.

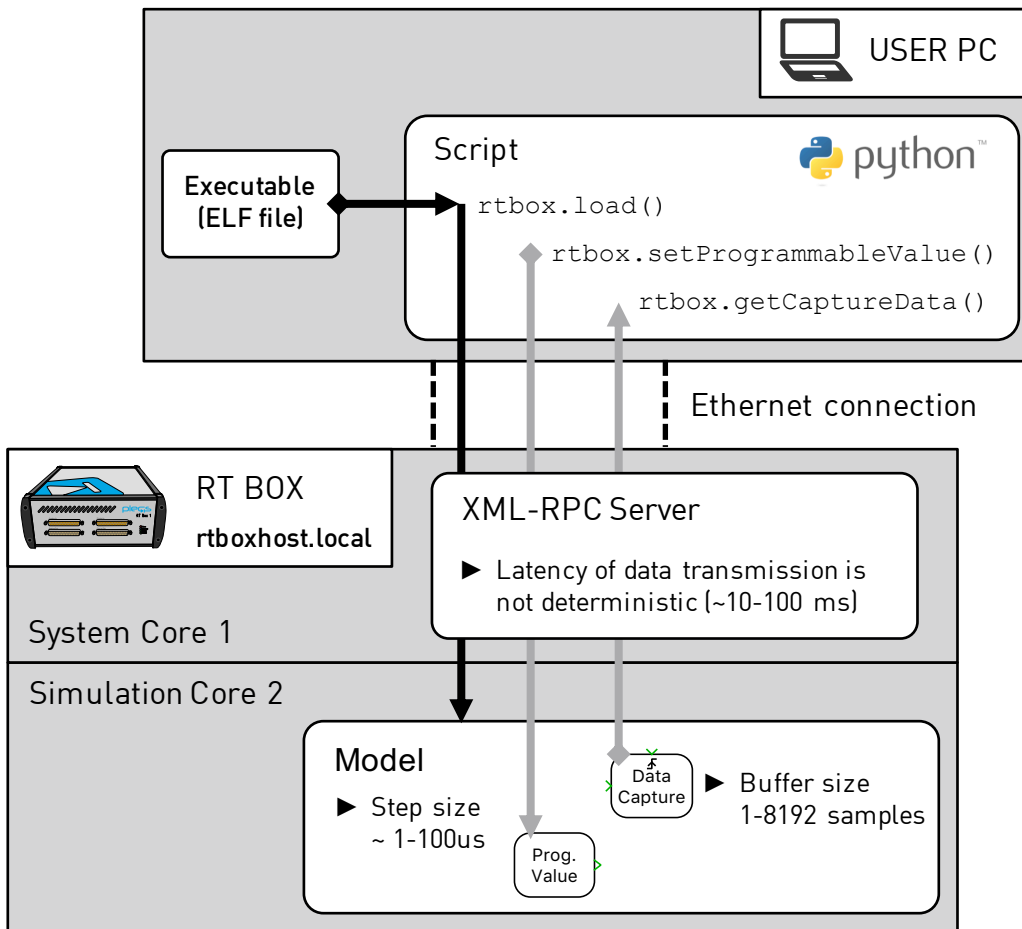


Figure 2: XML-RPC interface of the RT Box connected to the host computer using Ethernet

```
with open("rlc_network_scripting_codegen/rlc_network_scripting.elf", "rb") as f:
    print("Uploading executable")
    server.rtbox.load(xmlrpc.client.Binary(f.read()))
f.closed
```

The following command starts the real-time simulation:

```
server.rtbox.start()
```

The commands `getProgrammableValueBlocks()` and `getDataCaptureBlocks()` query the Programmable Value and Data Capture blocks that are placed in the PLECS model, respectively, as shown in Fig. 1.

```
inputblocks = server.rtbox.getProgrammableValueBlocks()
outputblocks = server.rtbox.getDataCaptureBlocks()
```

The command `setProgrammableValue()` sets the value of the DC input voltage V_{in} from the specified initial value of 1V in the PLECS model to 2V.

```
Vin = 2
print("Setting Vin as %.2f" % Vin + "V")
server.rtbox.setProgrammableValue('Input', [Vin])
```

In the parameter window of the "Capture1" block, a rising type **Trigger** with a **Trigger level** greater than 1 is specified. When the command `getCaptureTriggerCount()` reads a value greater

than 0, the command `getCaptureData()` reads the input voltage step response across the RLC network from 1 V to 2 V.

```
while server.rtbody.getCaptureTriggerCount('Capture1')==0:
    print("Waiting for data")
    time.sleep(1)
data1 = server.rtbody.getCaptureData('Capture1')
data2 = server.rtbody.getCaptureData('Capture2')
```

The following code tabulates the captured data and stops the real-time communication with the RT Box server:

```
Vm = [row[0] for row in data1['data']]
Am = [row[1] for row in data1['data']]
VmMax = data2['data'][0][0]

print("Stopping executable")
server.rtbody.stop();
print("Real-time simulation stopped")

print("Max value of Vm = %.2f" % VmMax + "V")
```

4 Simulation

The Python script can be executed in any Python IDE, or as described below. The Python script loads the `.elf` executable on the RT Box and starts the real-time simulation.

Note As described in section 1.1, please generate the `.elf` file before running the script. In addition, the RT Box hostname in the python script must be changed from `examplebox.local` to the hostname corresponding to the RT Box used, as described in section 3.1.

Executing Python

To access the Python script from either the Windows Command Prompt or Mac Terminal, change to the directory where the `.py` file is saved (i.e. inside the RT Box target support package folder). Here it is assumed that the folder is located on the Desktop.

For example, using the Windows Command Prompt:

```
cd C:\Desktop\PLECS_RT_Box\demos\rlc_network_scripting
```

Or using the Mac Terminal:

```
cd ~/Desktop/PLECS_RT_Box/demos/rlc_network_scripting
```

Then enter the following command to execute the script using Python 3.x in the Windows Command Prompt:

```
py -3 ./rlc_network_scripting.py
```

Or using the Mac Terminal:

```
python3 ./rlc_network_scripting.py
```

For Python 2.x, on Windows, replace `py -3` with `py -2`, and on Mac, replace `python3` with `python`.

The output from the Python script should then be as follows:

```
Uploading executable
Starting executable
Real-time simulation running
Available input blocks are:
['Input']
Available output blocks are:
['Capture1', 'Capture2']
Setting Vin as 2.00V
Stopping executable
Real-time simulation stopped
Max value of Vm = 2.54V
```

5 Conclusion

This model demonstrates the basic working principle of the XML-RPC interface of the RT Box, including the Programmable Value and Data Capture blocks from the PLECS RT Box component library.

6 Appendix

To view the Voltmeter and the Ammeter readings captured by “Capture1” block of Fig. 1, `matplotlib`, a freely available 2D plotting library for Python can be used. Fig. 3 displays the capacitor voltage and current waveforms when the input voltage of the RLC network is changed from 1 V to 2 V.

Installing matplotlib

Install `matplotlib` by entering the following commands:

For Python 3.x:

Using the Windows Command Prompt:

```
py -3 -m pip install -U matplotlib
```

If you receive an error message that the `pip` module is unknown, you will need to install it first, before installing `matplotlib`:

```
py -3 -m pip install -U pip
```

Using the Mac Terminal:

```
python3 -m pip install -U matplotlib
```

For Python 2.x, on Windows, replace `py -3` with `py -2`, and on Mac, replace `python3` with `python`.

Python Script

The script for plotting using Python is given below:

```
import matplotlib.pyplot as plt
plt.close('all')
x = [i * data1['sampleTime'] for i in range(0, len(data1['data']))]
fig, ax1 = plt.subplots()
ax1.plot(x, Vm, 'b')
ax1.set_xlabel('Time (s)')
ax1.set_ylabel('Vm (V)', color='b')
ax1.tick_params('y', colors='b')
ax2 = ax1.twinx()
ax2.plot(x, Am, 'r')
ax2.set_ylabel('Am (A)', color='r')
ax2.tick_params('y', colors='r')
plt.title("Voltmeter and Ammeter Readings")
plt.show()
```

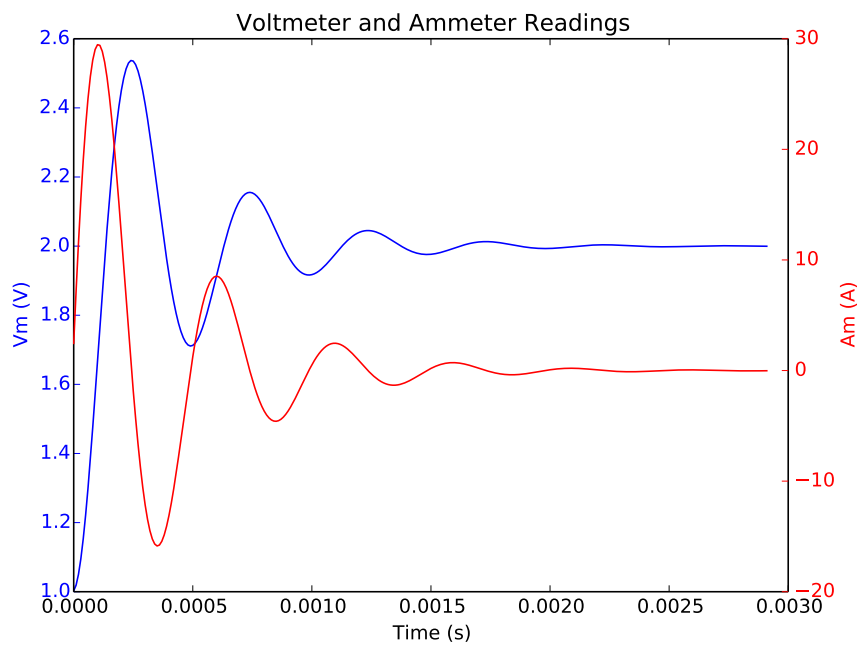


Figure 3: Capacitor voltage and current waveforms

References

- [1] *RT Box User Manual*, Plexim GmbH, Online: <https://www.plexim.com/sites/default/files/rtboxmanual.pdf>

Revision History:

RT Box Target Support Package 1.8.3

First release

How to Contact Plexim:

☎	+41 44 533 51 00	Phone
	+41 44 533 51 01	Fax
✉	Plexim GmbH Technoparkstrasse 1 8005 Zurich Switzerland	Mail
@	info@plexim.com	Email
	http://www.plexim.com	Web

RT Box Demo Model

© 2002–2022 by Plexim GmbH

The software PLECS described in this document is furnished under a license agreement. The software may be used or copied only under the terms of the license agreement. No part of this manual may be photocopied or reproduced in any form without prior written consent from Plexim GmbH.

PLECS is a registered trademark of Plexim GmbH. MATLAB, Simulink and Simulink Coder are registered trademarks of The MathWorks, Inc. Other product or brand names are trademarks or registered trademarks of their respective holders.