

PLECS

*DEMO MODEL*

## Three-Phase Diode Bridge Rectifier

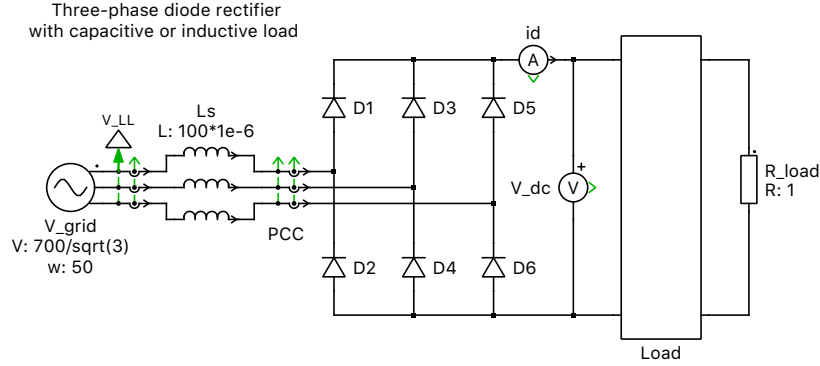
Last updated in PLECS 4.8.1

[www.plexim.com](http://www.plexim.com)

- ▶ Request a PLECS trial license
- ▶ Check the PLECS documentation

# 1 Overview

This example shows a three-phase, full-wave diode bridge rectifier with a configurable capacitive or inductive load. Three-phase rectifiers, also known as six-pulse rectifiers, are common in industrial and high-power applications.



**Figure 1: Three phase diode rectifier**

## 2 Electrical model

A diode rectifier is used for AC/DC conversion and allows the flow of current only in the direction of AC-input to DC-output. A full-wave rectifier converts a sinusoidal input waveform into positive half sinusoidal waves at twice the input frequency. In the case of a single-phase rectifier, the output voltage waveform is the absolute magnitude of the AC input voltage. For a bridge rectifier drawing three-phase balanced currents, however, the resulting output voltage on the DC side will show six pulses per cycle of the grid frequency.

**Output Voltage** The average output voltage for a six-pulse rectifier without grid-side inductance ( $L_s = 0$ ) and capacitive load is calculated as:

$$V_{dc} = \frac{3 \cdot \hat{V}_{LL}}{\pi}$$

where  $\hat{V}_{LL}$  is the amplitude of the line-to-line AC voltage.

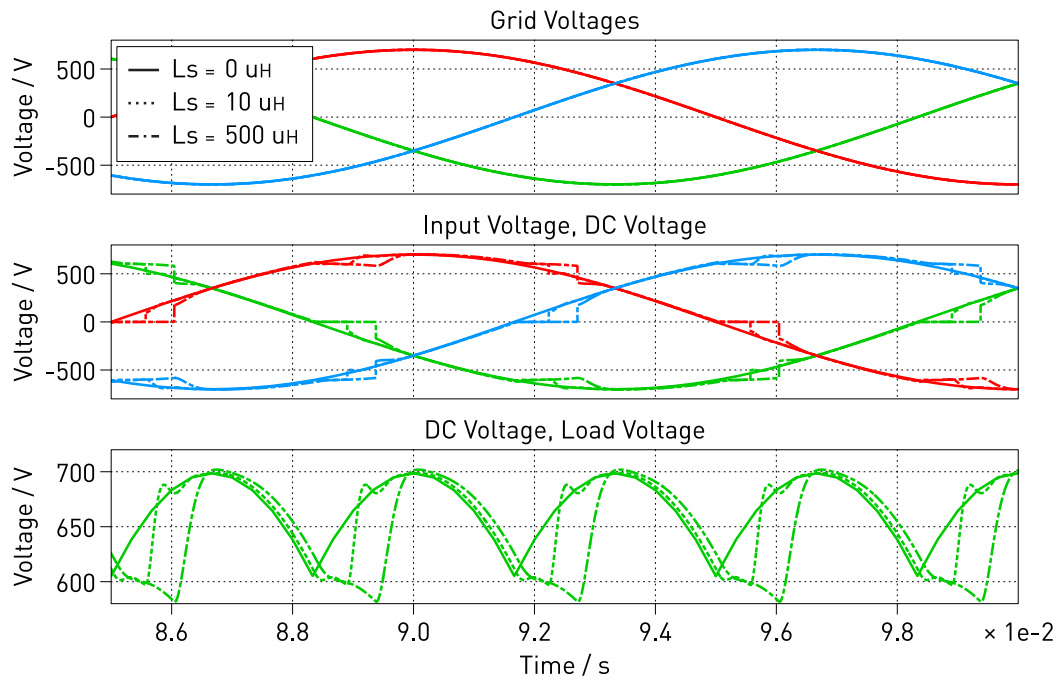
The grid side inductance makes the current commute between the diodes over a finite time interval. Due to this effect the average output voltage is reduced if  $L_s > 0$ . The formula for  $V_{dc}$  changes to [1]:

$$V_{dc} = \frac{3}{\pi} \left( \hat{V}_{LL} - \omega L_s \bar{i}_d \right)$$

**Load** The load for the rectifier system is implemented as a configurable subsystem, with choices for either a capacitive or inductive load. Note that with a capacitive load the DC and load voltages are the same, and with an inductive load the DC and load currents are the same.

## 3 Simulation

- Run a simulation with the default line inductance  $L_s = 100 \mu\text{H}$  and observe the commutation interval in the rectifier input voltage. During the commutation interval the rectifier input voltage stays zero which leads to a lower average  $V_{dc}$ . This can be seen in Fig. 2 that shows the different system quantities for line inductance values of  $L_s = \{0, 30, 100\} \mu\text{H}$ .



**Figure 2: Results of the simulation showing the commutation interval for a finite line inductance**

- Tune the load parameters and observe the resulting DC-side waveforms. Check that a larger load inductance reduces the DC voltage ripple, for example. Keep in mind that the waveforms will only reflect a change in the load parameters if that respective load type is active (changing the capacitance value when the inductive load subsystem configuration is active will not have any influence on the simulated results).

## References

- [1] N. Mohan, T.M. Undeland, W.P. Robbins, *Power Electronics: Converters, Applications, and Design*, John Wiley & Sons, 2003

## Revision History:

PLECS 4.3.1	First release
PLECS 4.8.1	Add information about commutation interval

## How to Contact Plexim:

☎	+41 44 533 51 00	Phone
	+41 44 533 51 01	Fax
✉	Plexim GmbH Technoparkstrasse 1 8005 Zurich Switzerland	Mail
@	info@plexim.com	Email
	<a href="http://www.plexim.com">http://www.plexim.com</a>	Web

## *PLECS Demo Model*

© 2002–2023 by Plexim GmbH

The software PLECS described in this document is furnished under a license agreement. The software may be used or copied only under the terms of the license agreement. No part of this manual may be photocopied or reproduced in any form without prior written consent from Plexim GmbH.

PLECS is a registered trademark of Plexim GmbH. MATLAB, Simulink and Simulink Coder are registered trademarks of The MathWorks, Inc. Other product or brand names are trademarks or registered trademarks of their respective holders.