

PLECS

*DEMO MODEL*

## Buck-Boost Converters

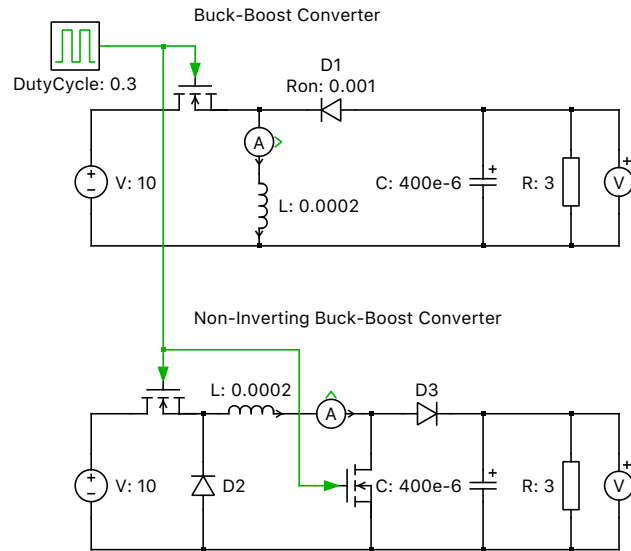
Last updated in PLECS 4.3.1

[www.plexim.com](http://www.plexim.com)

- ▶ Request a PLECS and PLECS Coder trial license
- ▶ Get the latest RT Box Target Support Package
- ▶ Check the PLECS and RT Box documentation

# 1 Overview

This demonstration shows an inverting and a non-inverting buck-boost converter, both unregulated.



**Fig. 1: Buck-boost Converter**

## 2 Electrical model

The buck-boost is a DC/DC converter which can be configured to produce an output voltage either lower or higher than the input voltage. Two different topologies exist: one has an inverting output where the polarity is the opposite the input, and the second maintains the same polarity at the output as at the input.

The inverting buck-boost converter has an ideal transfer function of:

$$\frac{V_{\text{out}}}{V_{\text{in}}} = \frac{-D}{1-D}$$

where  $D$  is the duty cycle.

This means that a duty cycle value of 0.5 will create a unity gain of 1 with opposite polarity, and values higher or lower than 0.5 will step-up or step-down the output voltage, respectively.

The second topology is essentially a buck converter followed by a boost converter, where a single inductor is shared by both and connects the two in series. The ideal transfer function is the same, except that the non-inverting buck-boost converter will produce an output polarity consistent with that of the input.

## 3 Simulation

The first Scope shows the output voltage and the source current for the regular converter and the second Scope for the non-inverting converter. As the circuits have the same passive component parameters, the currents in the inductor are shown to be the equal while the output voltages are of opposite polarity.

## Revision History:

PLECS 4.3.1      First release

## How to Contact Plexim:

|   |  |       |
|---|--|-------|
| ☎ | +41 44 533 51 00   | Phone |
|   | +41 44 533 51 01   | Fax   |
| ✉ | Plexim GmbH<br>Technoparkstrasse 1<br>8005 Zurich<br>Switzerland | Mail  |
| @ | info@plexim.com  | Email |
|   | <a href="https://www.plexim.com">https://www.plexim.com</a>      | Web   |

## *PLECS Demo Model*

© 2002–2026 by Plexim GmbH

The software PLECS described in this document is furnished under a license agreement. The software may be used or copied only under the terms of the license agreement. No part of this manual may be photocopied or reproduced in any form without prior written consent from Plexim GmbH.

PLECS is a registered trademark of Plexim GmbH. MATLAB, Simulink and Simulink Coder are registered trademarks of The MathWorks, Inc. Other product or brand names are trademarks or registered trademarks of their respective holders.