



PLECS

*DEMO MODEL*

## Buck Converter with Digital Controls

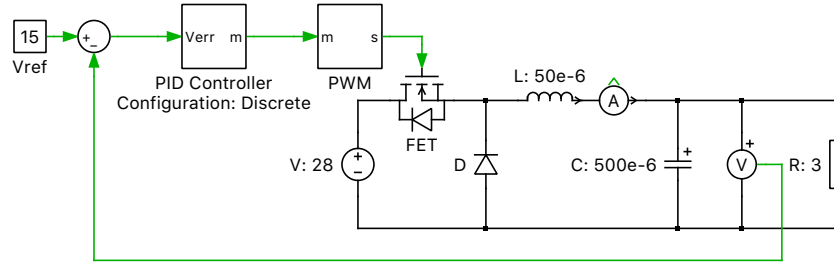
Last updated in PLECS 4.3.1

[www.plexim.com](http://www.plexim.com)

- ▶ Request a PLECS and PLECS Coder trial license
- ▶ Get the latest RT Box Target Support Package
- ▶ Check the PLECS and RT Box documentation

# 1 Overview

This demonstration shows a buck converter with a digital controller implementation. The controller block uses a configurable subsystem that can be toggled between a continuous and discrete proportional integral derivative (PID) control scheme. By looking under the mask (**Ctrl+U**, on macOS: **Cmd+U**) of the PID Controller block, two further masked subsystems contain the S- and Z-domain controllers.



**Fig. 1: Buck converter with digital controls**

## Revision History:

PLECS 4.3.1      First release

## How to Contact Plexim:

☎	+41 44 533 51 00	Phone
	+41 44 533 51 01	Fax
✉	Plexim GmbH Technoparkstrasse 1 8005 Zurich Switzerland	Mail
@	info@plexim.com	Email
	<a href="https://www.plexim.com">https://www.plexim.com</a>	Web

## *PLECS Demo Model*

© 2002–2026 by Plexim GmbH

The software PLECS described in this document is furnished under a license agreement. The software may be used or copied only under the terms of the license agreement. No part of this manual may be photocopied or reproduced in any form without prior written consent from Plexim GmbH.

PLECS is a registered trademark of Plexim GmbH. MATLAB, Simulink and Simulink Coder are registered trademarks of The MathWorks, Inc. Other product or brand names are trademarks or registered trademarks of their respective holders.