



PLECS

*DEMO MODEL*

## Flyback Converter

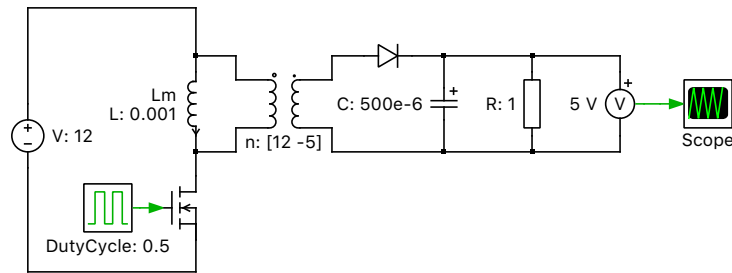
Last updated in PLECS 4.3.1

[www.plexim.com](http://www.plexim.com)

- ▶ Request a PLECS and PLECS Coder trial license
- ▶ Get the latest RT Box Target Support Package
- ▶ Check the PLECS and RT Box documentation

# 1 Overview

This example demonstrates an unregulated single-output flyback converter.



**Fig. 1: Flyback converter**

## 2 Electrical model

A flyback converter supplies a constant DC output voltage from either a rectified AC or DC source. A transformer provides isolation between the input and output sides. Rather than act as a classical transformer where currents flow through all coupled windings at the same time, the flyback transformer is essentially a coupled inductor. It stores energy via magnetic flux in its primary side winding while the switch is conducting. This energy is transferred to the secondary side winding (and load) once the switch is opened.

The topology is based on a buck-boost converter where the buck-boost shared inductor is replaced by the coupled inductor transformer. The operating conditions of a flyback converter are therefore similar to a buck-boost converter, but the transfer function is influenced not only by the duty cycle but also by the winding turns ratio and parasitic elements.

This example models an ideal DC/DC flyback converter without any parasitic elements and with a duty cycle of 0.5, which provides a unity gain output voltage with the buck-boost converter. With this configuration, the output voltage can be manipulated solely by the choice of winding turns ratio.

## 3 Simulation

Run the simulation with the model as provided and verify that with a DC input of 12 V and a 12:5 transformer winding ratio, the output voltage is 5 V. Then adjust the windings ratio and observe the influence on the output voltage.

More advanced examples of a flyback converter are given in the demo models "Flyback Converter with Analog Controls" and "Flyback Converter with Magnetics".

## Revision History:

PLECS 4.3.1      First release

## How to Contact Plexim:

☎	+41 44 533 51 00	Phone
	+41 44 533 51 01	Fax
✉	Plexim GmbH Technoparkstrasse 1 8005 Zurich Switzerland	Mail
@	info@plexim.com	Email
	<a href="https://www.plexim.com">https://www.plexim.com</a>	Web

## *PLECS Demo Model*

© 2002–2026 by Plexim GmbH

The software PLECS described in this document is furnished under a license agreement. The software may be used or copied only under the terms of the license agreement. No part of this manual may be photocopied or reproduced in any form without prior written consent from Plexim GmbH.

PLECS is a registered trademark of Plexim GmbH. MATLAB, Simulink and Simulink Coder are registered trademarks of The MathWorks, Inc. Other product or brand names are trademarks or registered trademarks of their respective holders.