

PLECS

DEMO MODEL

Single-Ended Primary Inductance Converter

Last updated in PLECS 4.3.1

www.plexim.com

- ▶ Request a PLECS and PLECS Coder trial license
- ▶ Get the latest RT Box Target Support Package
- ▶ Check the PLECS and RT Box documentation

1 Overview

This example demonstrates an unregulated single-ended primary inductance converter (SEPIC).

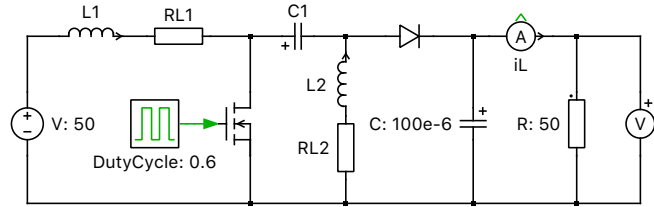


Fig. 1: Schematic of the single-ended primary inductance DC/DC converter (SEPIC)

2 Model

The SEPIC converter converts a DC input voltage to an output voltage of lower, equal, or higher DC voltage. This function closely resembles a non-inverting buck-boost converter; however a capacitor couples the input and output rather than an inductor. When the switch is off, energy is transferred from the input side of capacitor C1 to the output side. The converter's transfer function is influenced primarily by the duty cycle of the switch.

3 Simulation

Run the simulation with the model as provided to view the signals. Verify by inspecting the current through inductor L1 at steady state that the converter operates in continuous conduction mode (CCM). Also, change the equivalent series resistances (ESR) of the two inductors or the diode parameters and observe the effect on the efficiency of the converter. The results for two simulations with different ESR (nominal value and scaled by a factor of 2) of the system efficiency η are given in Fig. 2.

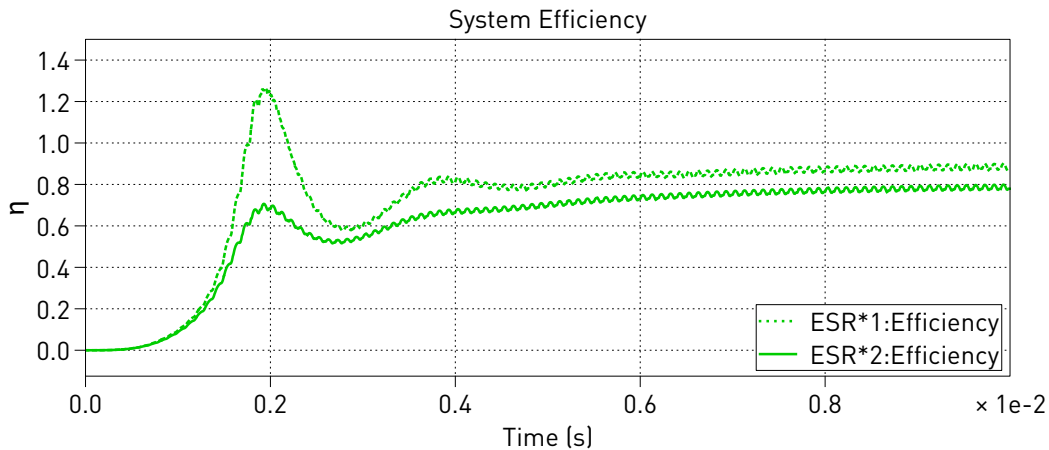


Fig. 2: Results of the system efficiency for different ESR values

Revision History:

PLECS 4.3.1 First release

How to Contact Plexim:

| | | |
|---|--|-------|
| ☎ | +41 44 533 51 00 | Phone |
| | +41 44 533 51 01 | Fax |
| ✉ | Plexim GmbH Technoparkstrasse 1 8005 Zurich Switzerland | Mail |
| @ | info@plexim.com | Email |
| | https://www.plexim.com | Web |

PLECS Demo Model

© 2002–2026 by Plexim GmbH

The software PLECS described in this document is furnished under a license agreement. The software may be used or copied only under the terms of the license agreement. No part of this manual may be photocopied or reproduced in any form without prior written consent from Plexim GmbH.

PLECS is a registered trademark of Plexim GmbH. MATLAB, Simulink and Simulink Coder are registered trademarks of The MathWorks, Inc. Other product or brand names are trademarks or registered trademarks of their respective holders.