



PLECS

DEMO MODEL

Boost Converter

Last updated in PLECS 4.3.1

www.plexim.com

- ▶ Request a PLECS trial license
- ▶ Check the PLECS documentation

1 Overview

This demonstration shows an unregulated boost converter with a resistive load.

2 Model

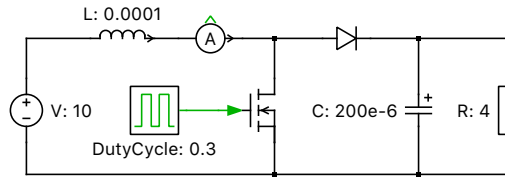


Figure 1: Boost converter

A boost converter is also known as a “step-up” converter since it converts an input DC voltage to a higher DC voltage at its output. It requires at least two semiconductor switches, with a diode and transistor providing the most simple arrangement. An inductor is used to store energy in the form of current at the input, and a capacitor is used as a filtering component to minimize the voltage ripple at the load.

In this model, the load is represented as a resistor and a MOSFET is used to control the current flow through the diode to charge the capacitor. The MOSFET is driven by a fixed duty cycle, with a default value of 0.3, and a switching frequency of 5,000 Hz. With this configuration, the converter operates in continuous conduction mode (CCM), meaning the current in the inductor does not fully discharge when the switch is off.

The equation for the ideal transfer function of a boost converter operating in CCM is:

$$\frac{V_{\text{out}}}{V_{\text{in}}} = \frac{1}{1 - D}$$

where D is the duty cycle.

The opposite of CCM is discontinuous conduction mode (DCM), where the current remains at zero at the end of each switching cycle. DCM operation is often a strong candidate for converters that need to operate over a wide range of loads where maintaining a positive inductor current at all times would require either a very high switching frequency (more losses) or a large inductor (more cost). Another example candidate for DCM is a converter that only needs to convert low power levels, as the losses due to the ripple current may not significantly influence the efficiency.

DCM has an advantage from a controls perspective in addition to reduced switching losses. Another advantage of DCM operation is that such a design may require cheaper, uni-directional switches only, rather than a FET or IGBT with integrated anti-parallel diode, which could be more expensive. Note that the transfer function of a boost converter operating in DCM is dependent on not only D , but also L , V_{in} , f_{sw} , and I_{out} , and therefore may be more difficult to regulate.

3 Simulation

Run the simulation with the model as provided to view the signals and verify that the load is

$$V_{\text{in}} \cdot \frac{1}{1 - 0.3} = 10 \text{ V} \cdot \frac{1}{0.7} = 14 \text{ V}$$

Then change the switching frequency to 3,000 Hz to enter DCM. Notice that while the average output voltage remains the same, the output voltage ripple increases. Generally, such a converter would be designed to minimize output voltage ripple to within a certain limit.

To observe how switching frequency influences output voltage ripple, increase the value to 50,000 Hz. The inductor current now has less time to charge and discharge per cycle so the ripple magnitude is reduced. Higher switching speeds do create more switching losses, however, so a tradeoff between ripple and efficiency must always be considered.

4 Conclusion

This model discusses the operation of an open-loop boost converter and suggests ways to interact with the circuit.

Revision History:

PLECS 4.3.1 First release

How to Contact Plexim:

| | | |
|---|--|-------|
| ☎ | +41 44 533 51 00 | Phone |
| | +41 44 533 51 01 | Fax |
| ✉ | Plexim GmbH Technoparkstrasse 1 8005 Zurich Switzerland | Mail |
| @ | info@plexim.com | Email |
| | http://www.plexim.com | Web |

PLECS Demo Model

© 2002–2023 by Plexim GmbH

The software PLECS described in this document is furnished under a license agreement. The software may be used or copied only under the terms of the license agreement. No part of this manual may be photocopied or reproduced in any form without prior written consent from Plexim GmbH.

PLECS is a registered trademark of Plexim GmbH. MATLAB, Simulink and Simulink Coder are registered trademarks of The MathWorks, Inc. Other product or brand names are trademarks or registered trademarks of their respective holders.