

PLECS

DEMO MODEL

Cuk Converter

Last updated in PLECS 4.3.1

www.plexim.com

- ▶ Request a PLECS trial license
- ▶ Check the PLECS documentation

1 Overview

This example demonstrates an unregulated, non-isolated Ćuk converter.

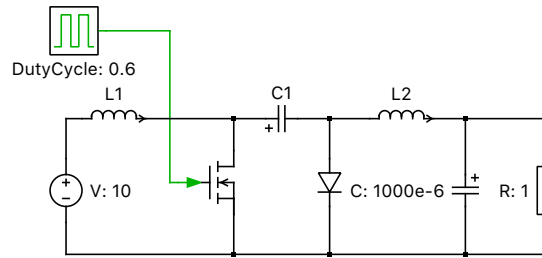


Figure 1: Ćuk converter

2 Model

The Ćuk converter is a DC/DC converter which, like a buck-boost topology, can be configured to produce an output voltage either lower or higher than the input voltage. However, it always produces an output voltage whose polarity is opposite of that of the input.

The non-isolated Ćuk converter uses a capacitor for energy storage, rather than an inductor like most switched-mode supply topologies.

The converter has an ideal transfer function of:

$$\frac{V_{\text{out}}}{V_{\text{in}}} = \frac{-D}{1-D}$$

where D is the duty cycle.

This means that a duty cycle value of 0.5 will create a unity gain of 1 with opposite polarity, and values higher or lower than 0.5 will step-up or step-down the output voltage, respectively.

3 Simulation

Run the simulation with the model as provided to view the signals and verify that the load voltage has an absolute magnitude of:

$$V_{\text{in}} \cdot \frac{0.6}{1-0.6} = 10 \text{ V} \cdot \frac{3}{2}$$

or approximately 15 V.

Revision History:

PLECS 4.3.1 First release

How to Contact Plexim:

☎	+41 44 533 51 00	Phone
	+41 44 533 51 01	Fax
✉	Plexim GmbH Technoparkstrasse 1 8005 Zurich Switzerland	Mail
@	info@plexim.com	Email
	http://www.plexim.com	Web

PLECS Demo Model

© 2002–2023 by Plexim GmbH

The software PLECS described in this document is furnished under a license agreement. The software may be used or copied only under the terms of the license agreement. No part of this manual may be photocopied or reproduced in any form without prior written consent from Plexim GmbH.

PLECS is a registered trademark of Plexim GmbH. MATLAB, Simulink and Simulink Coder are registered trademarks of The MathWorks, Inc. Other product or brand names are trademarks or registered trademarks of their respective holders.